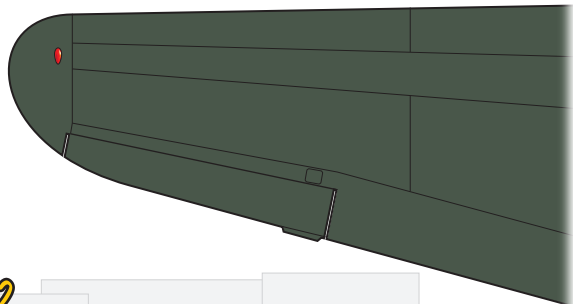


1

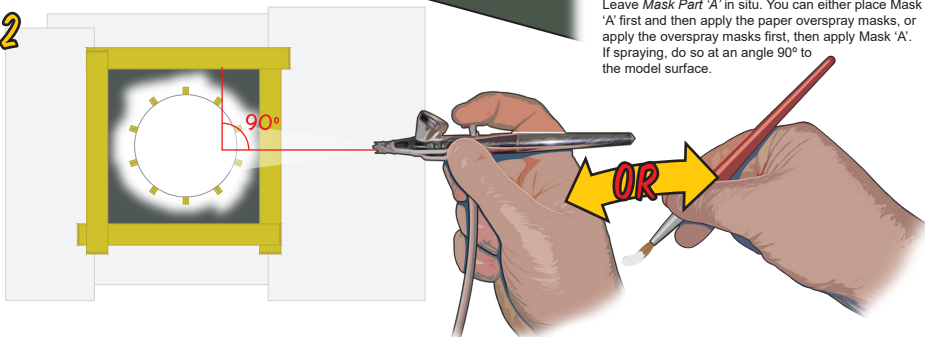
APPLICATION OF 1919-1942 INSIGNIA



1. Finish model as you would prior to placing standard decals. We would recommend *lightly* sealing the finish with a good quality matt or semi-matt varnish.

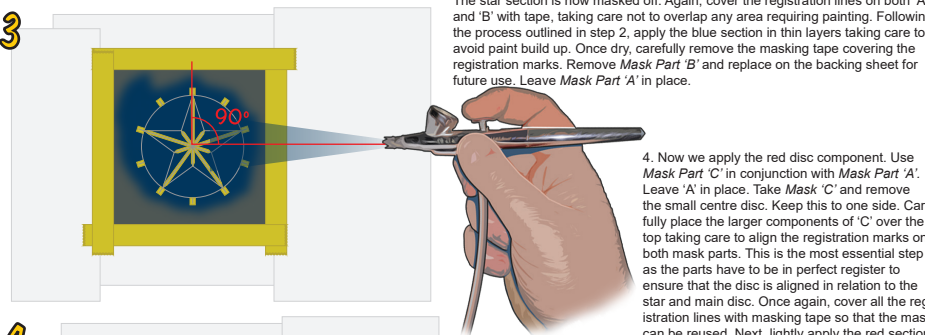
2. Use *Mask Part 'A'*. Place in required position on model. Cut to size if needed. Mask off area around the mask. Next, cover the registration lines around the disc with low tack masking tape (Tamiya tape is ideal). This is to protect the lines from overspray or overpaint as you'll need these to be visible when realigning mask parts 'B' & 'C'. Spray or hand paint the white section taking care to build up the paint in thin layers to prevent the masking being raised against the model finish. Carefully remove the small masking tape strips covering the registration lines. Leave *Mask Part 'A'* in situ. You can either place *Mask 'A'* first and then apply the paper overspray masks, or apply the overspray masks first, then apply *Mask 'A'*. If spraying, do so at an angle 90° to the model surface.

2



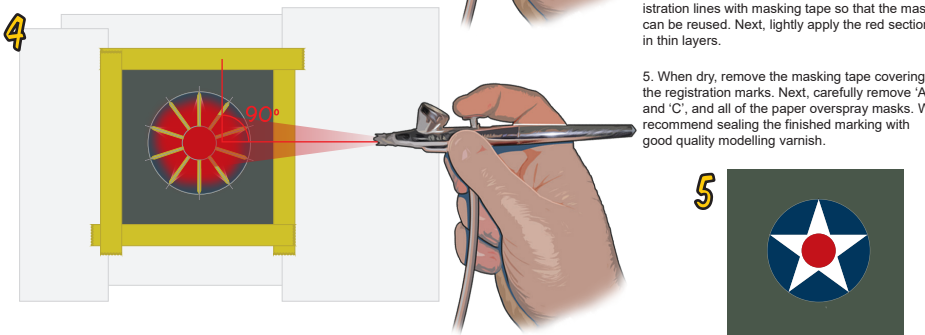
3. Use *Mask Part 'B'*. Carefully align the registration lines on 'B' with those on 'A'. The star section is now masked off. Again, cover the registration lines on both 'A' and 'B' with tape, taking care not to overlap any area requiring painting. Following the process outlined in step 2, apply the blue section in thin layers taking care to avoid paint build up. Once dry, carefully remove the masking tape covering the registration marks. Remove *Mask Part 'B'* and replace on the backing sheet for future use. Leave *Mask Part 'A'* in place.

3



4. Now we apply the red disc component. Use *Mask Part 'C'* in conjunction with *Mask Part 'A'*. Leave 'A' in place. Take *Mask 'C'* and remove the small centre disc. Keep this to one side. Carefully place the larger components of 'C' over the top taking care to align the registration marks on both mask parts. This is the most essential step as the parts have to be in perfect register to ensure that the disc is aligned in relation to the star and main disc. Once again, cover all the registration lines with masking tape so that the mask can be reused. Next, lightly apply the red section in thin layers.

4



5. When dry, remove the masking tape covering the registration marks. Next, carefully remove 'A' and 'C', and all of the paper overspray masks. We recommend sealing the finished marking with good quality modelling varnish.

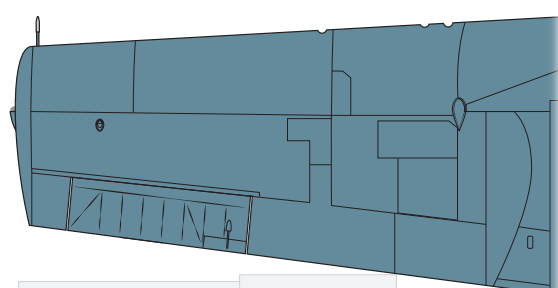
5



It goes without saying, but we would advise that you have some experience of applying markings with masks. Although a trickier option than using standard decals, masking can give a much greater degree of flexibility and also realism, especially when a specific standard of weathering or fading needs to be achieved.

1

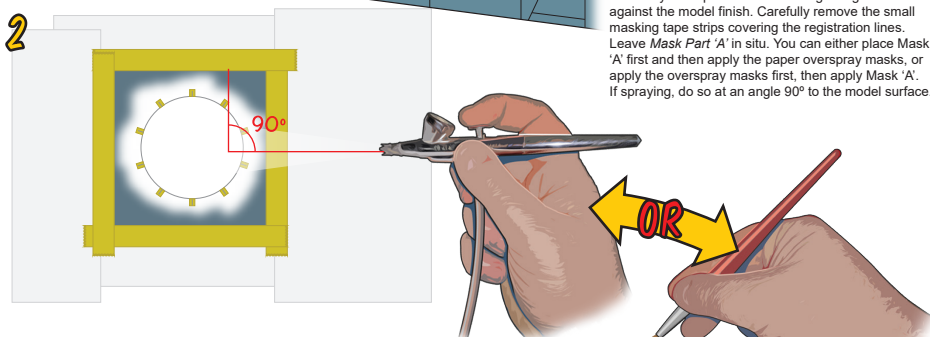
APPLICATION OF 1942-1943 INSIGNIA



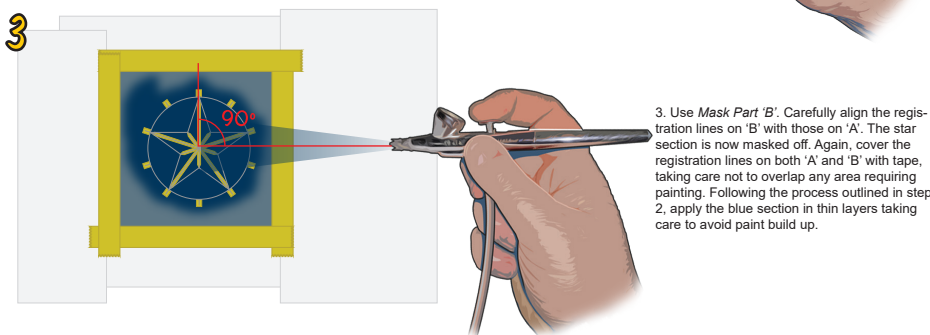
1. Finish model as you would prior to placing standard decals. We would recommend *lightly* sealing the finish with a good quality matt or semi-matt varnish.

2. Use *Mask Part 'A'*. Place in required position on model. Cut to size if needed. Mask off area around the mask. Next, cover the registration lines around the disc with low tack masking tape (Tamiya tape is ideal). This is to protect the lines from overspray or overpaint as you'll need these to be visible when realigning mask parts 'B' & 'C'. Spray or hand paint the white section taking care to build up the paint in thin layers to prevent the masking being raised against the model finish. Carefully remove the small masking tape strips covering the registration lines. Leave *Mask Part 'A'* in situ. You can either place *Mask 'A'* first and then apply the paper overspray masks, or apply the overspray masks first, then apply *Mask 'A'*. If spraying, do so at an angle 90° to the model surface.

2

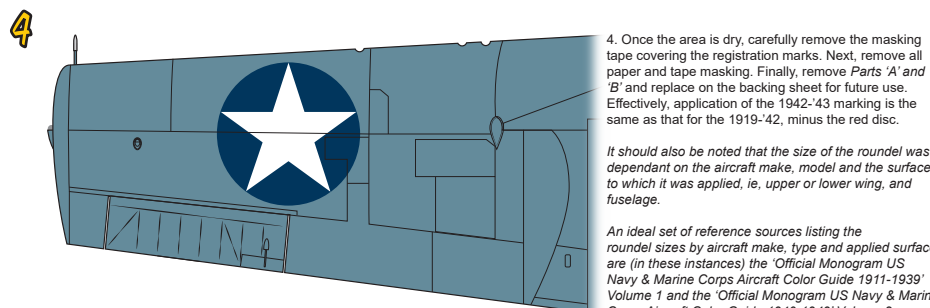


3



3. Use *Mask Part 'B'*. Carefully align the registration lines on 'B' with those on 'A'. The star section is now masked off. Again, cover the registration lines on both 'A' and 'B' with tape, taking care not to overlap any area requiring painting. Following the process outlined in step 2, apply the blue section in thin layers taking care to avoid paint build up.

4



4. Once the area is dry, carefully remove the masking tape covering the registration marks. Next, remove all paper and tape masking. Finally, remove *Parts 'A' and 'B'* and replace on the backing sheet for future use. Effectively, application of the 1942-'43 marking is the same as that for the 1919-'42, minus the red disc.

It should also be noted that the size of the roundel was dependent on the aircraft make, type and applied surface are (in these instances) the 'Official Monogram US Navy & Marine Corps Aircraft Color Guide 1911-1939' Volume 1 and the 'Official Monogram US Navy & Marine Corps Aircraft Color Guide 1940-1949' Volume 2.

An ideal set of reference sources listing the roundel sizes by aircraft make, type and applied surface are (in these instances) the 'Official Monogram US Navy & Marine Corps Aircraft Color Guide 1911-1939' Volume 1 and the 'Official Monogram US Navy & Marine Corps Aircraft Color Guide 1940-1949' Volume 2.